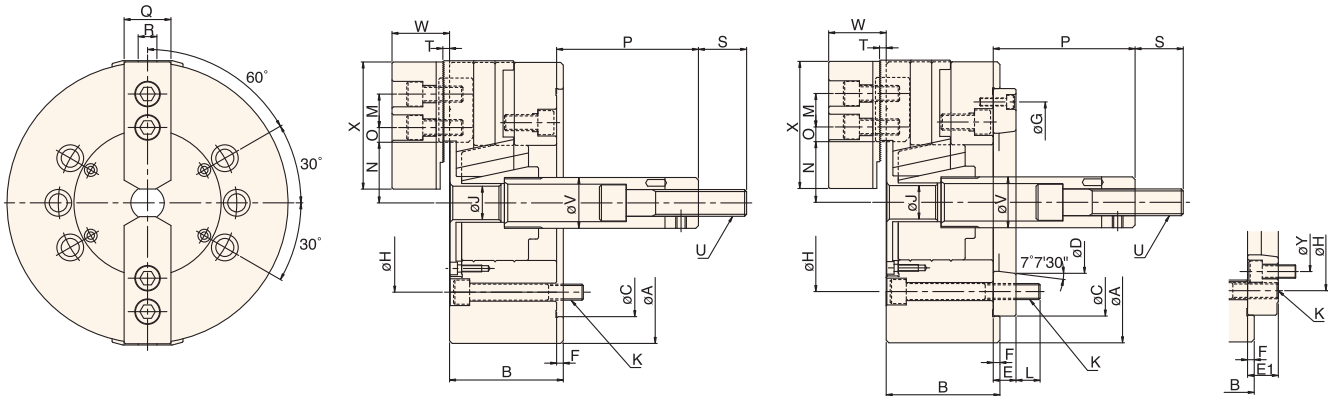


## 2-JAW SOLID POWER CHUCKS



### ■ DIMENSIONS



### ■ SPECIFICATIONS

UNIT:mm

MODEL / SPEC.	Nose Of Spindle	A	B	C (h6)	D	E	E1	F	G	H	J	K	L	M	N max.
CLT-06	A <sub>2</sub> -5	165	74	140	82.563	15	--	5	116	104.8	21	6-M10x1.5P	14	20	37.8
CLT-08	A <sub>2</sub> -6(A <sub>2</sub> -5)	210	85	170	106.375	17	23	5	150	133.4	25	6-M12x1.75P	18	25	46.3
CLT-10	A <sub>2</sub> -8(A <sub>2</sub> -6)	254	89	220	139.719	18	28	5	190	171.4	34	6-M16x2P	25	30	51.4
CLT-12	A <sub>2</sub> -8	304	106	220	139.719	18	--	6	190	171.4	34	6-M16x2P	25	30	60.7

MODEL / SPEC.	N min.	O max.	O min.	P max.	P min.	Q	R	S	T	U	V	W	X	Y	Plunger Stroke (mm)	Jaw Stroke [Diameter] (mm)
CLT-06	33.25	15.1	9.1	101.5	81.5	31	12	36	4	M16x2P	34	39	73	--	20	8.5
CLT-08	41.9	22.1	10.1	127	106	35	14	36	5	M20x2.5P	38	42	95	104.8	21	8.8
CLT-10	47	30.6	9.6	158	133	40	16	36	5	M20x2.5P	45	46	110	133.4	25	8.8
CLT-12	55.45	48.6	12.6	163	133	50	18	36	5	M20x2.5P	50	54	130	--	30	10.5

MODEL / SPEC.	Max.Speed r.p.m.(min <sup>-1</sup> )	Max. Pull Force kgf (KN)	Max. Gripping Force kgf (KN)	Max. Hydr. Pressure kgf/cm <sup>2</sup> (Mpa)	Weight (kg)	Matching Cylinder	Gripping Range
CLT-06	5000	1220 (12)	3460 (34)	19 (1.9)	11.1	L1020	ø9~ø165
CLT-08	4000	1630 (16)	4990 (49)	16 (1.6)	21.3	L1225	ø12~ø210
CLT-10	3500	1930 (19)	7140 (70)	19 (1.9)	32.6	L1225	ø15~ø254
CLT-12	3000	2750 (27)	10300 (101)	18.5 (1.8)	57.0	L1530	ø20~ø304