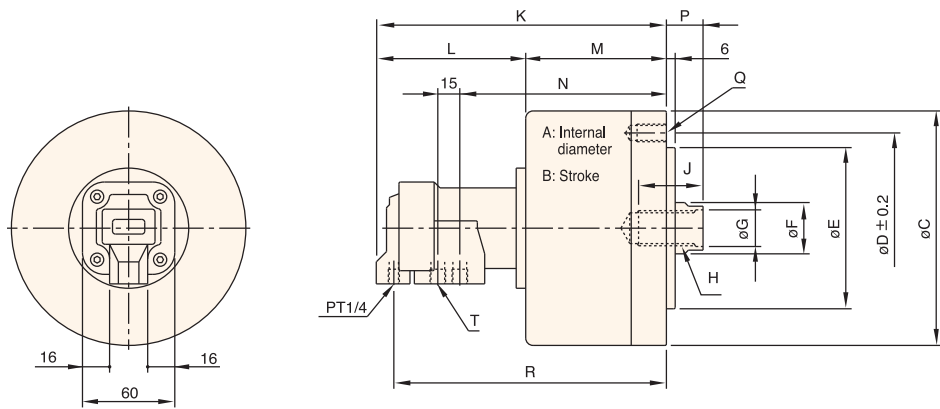


SOLID ROTARY HYDRAULIC CYLINDERS



■ DIMENSIONS



Solid rotary hydraulic cylinder:

• **Compact & Lightweight:**

Aluminum-Alloy made outer structure makes the weight lighter than traditional rotary cylinders; meanwhile, the compactness and miniaturization enhance the stability and lower the burden of machines.

■ SPECIFICATIONS

UNIT:mm

MODEL / SPEC.	A	B	C	D	E (h7)	F	G (H8)	H	J	K	L	M
L0815	80	15	112	90	65	25	-	M16x2P	30	176	102	74
L1020	100	20	135	100	80	30	-	M20x2.5P	35	191	102	89
L1225	125	25	160	130	110	35	-	M24x3P	44	198	102	96
L1530	150	30	190	130	110	45	31	M30x3.5P	45	207	102	105
L2035	200	35	245	145	120	55	37	M36x4P	60	232	102	130

MODEL / SPEC.	N	P max.	P min.	Q	R	T	Piston Stroke (mm)	Max.Speed r.p.m (min ⁻¹)
L0815	119	45	30	6-M8x1.25Px16L	164	2-PT3/8	15	6000
L1020	134	45	25	6-M10x1.5Px20L	179	2-PT3/8	20	5500
L1225	141	50	25	12-M12x1.75Px20L	186	2-PT3/8	25	5500
L1530	150	55	25	12-M12x1.75Px24L	195	2-PT3/8	30	4000
L2035	175	70	35	12-M16x2Px30L	220	2-PT1/2	35	4000

MODEL / SPEC.	GD ² (kg·m ²)	Max.Push Force (KN)		Oil Leakage Rate (ℓ / min)	Max. Pressure (Mpa)		Piston Area (cm ²)		Weight (kg)
		kgf	(KN)		kgf/cm ²	(Mpa)	Push Side	Pull Side	
L0815	0.01	1500	(14.7)	0.8	35	(3.4)	48	43	3.4
L1020	0.04	2700	(26.5)	0.8	40	(3.9)	75	68	5.0
L1225	0.08	4200	(41)	0.8	40	(3.9)	119	110	6.8
L1530	0.18	6200	(60.7)	0.8	40	(3.9)	173	157	9.9
L2035	0.38	11100	(108.8)	0.8	40	(3.9)	310	286	19.1