

# GHA6-8-66 Hydraulic Power Chuck

## Description:

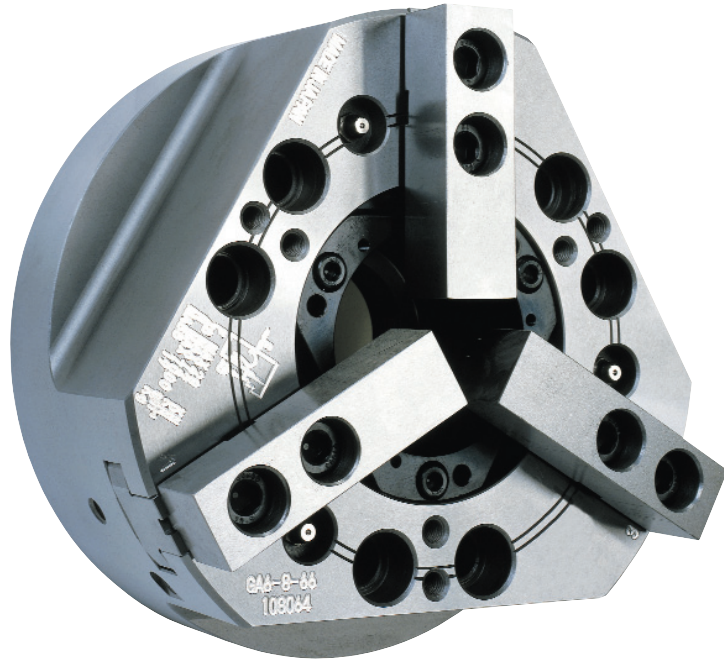
8" big bore thru-hole hydraulic chuck

## Applications:

- High speed turning applications
- Well suited for hard turning applications
- Also good for all aluminum and steel thru-hole work
- Critical part production
- Used in high and low volume applications

## Key Features:

- 7000 rpm turning faster than other 8" thru-hole competitors (6"/8,000 rpm & 10"/5000 rpm models under development)
- 66 mm thru-hole is much larger than standard 52mm models
- Repeatability of <10 microns highly accurate clamping



**Requiring better production rates and accuracies for your demanding thru-hole turning applications? Need a larger thru-hole to turn chuck larger parts or bar feed larger diameter bars?**

Our GHA6-8-66 Hydraulic Power Chuck delivers the complete package. This 8", three jaw big bore chuck delivers 7,000 rpm turning performance, bringing you higher feeds/speeds and increased metal removal rates to tackle tough jobs like aluminum and hard turning steel applications.

Compare the larger 66mm thru-hole feature-much larger than the 52mm thru-hole found on competition's 8" models. This chuck swallows a much larger bar stock, bringing you increased application versatility.

And there's no skimping on accuracy. Check out its repeatability... < 10 microns. Accurate clamping results in more accurate parts...and increased profitability.

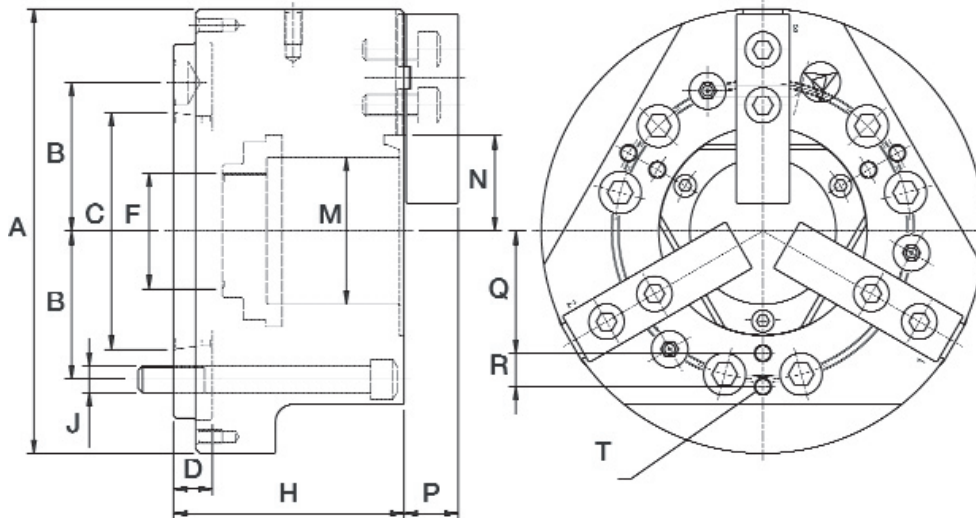
High quality...rugged...productive... and internationally designed/American-built and supported. All found in this and all other Power Operated Chucks (2- and 3-Jaw models, Thru-Hole and Solid Center designs) — check out our workholding line's breadth.

***LMC Workholding... power for today's demanding machining applications.***



**LMC** Workholding

# GHA6-8-66 Hydraulic Power Chuck



## Specifications

	GHA6-8-66-01	GHA6-8-66-02
Max Rotation Speed (rpm)	7000	7000
Jaw Stroke (dia, mm)	5.8	5.8
Sifter Stroke (mm)	13	13
Gripping Force (kN)	71.54	71.54
Max. Draw Pull (kN)	27.73	27.73
Weight (KG)	19	19
GD <sup>2</sup> Value (N-m <sup>2</sup> )	3.74	3.74
Good Balance	G10	G10
Applicable Cylinder	2R120 / 21-25	2R120 / 21-25
A (mm)	200	200
B (mm)	66.675	66.675
C	A-6	A-6
D (mm)	17.5	17.5
F	M72 × P1.5	M52 × P1.5
H (mm)	104	104
J	6-M12	6-M12
M (dia, mm)	66	66
N (Max / Min, mm)	43 / 40.1	43 / 40.1
P (mm)	24.5	24.5
Q (mm)	55	55
R (mm)	15	15
T	6-MB-15	6-M8 x 15

Note: 6" (proposed 8000 rpm) and 10" (proposed 5000 rpm) models under development.

The LMC Workholding line includes:



- Hydraulic power chucks, cylinders and wheel chucks



- Atling steady rests



- Neidlein face drivers, as well as live and dead centers

[www.LMCworkholding.com](http://www.LMCworkholding.com)

LMC Workholding  
P.O. Box 7006 • 1200 West Linden Avenue  
Logansport, Indiana 46947-7006  
Phone 574-735-0225 • Fax 574-722-6559  
E-mail: info@LMCworkholding.com

