

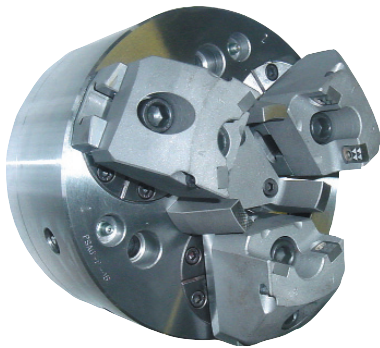
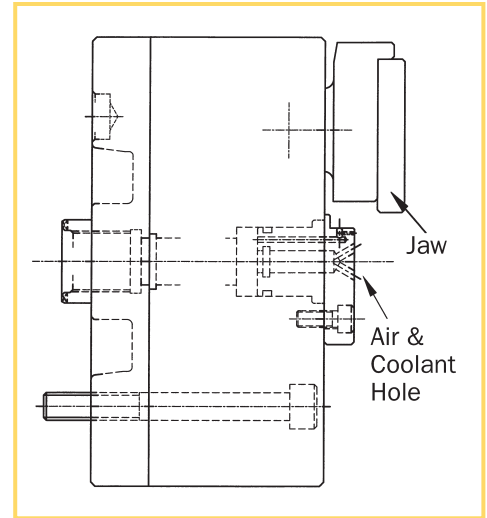
3 Jaw (PS/PSC & PG/PGC Series)

Power Swing Chucks

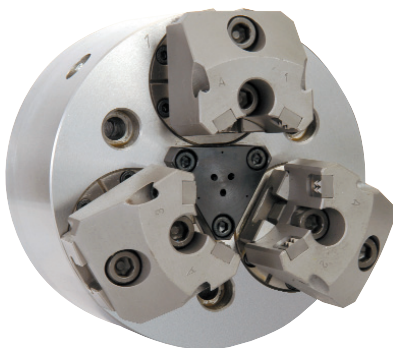
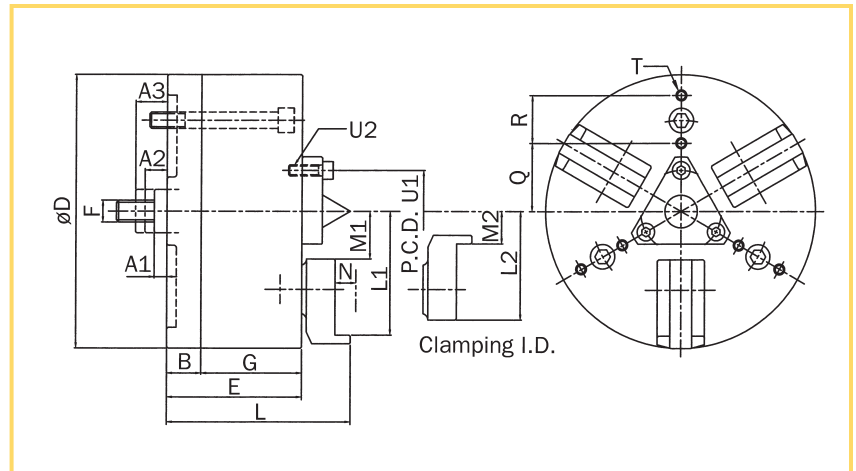
Our PS and PG Chucks are suited for round/nearly round parts (specifically forged or cast parts) that require machining. They use a ball lock, knuckle mechanism that functions as a pull-down and clamping device, improving clamp accuracy and steadiness over long machining periods.

Both models are offered in standard 6", 8", 10", 12", 15", 18" and 21" sizes.

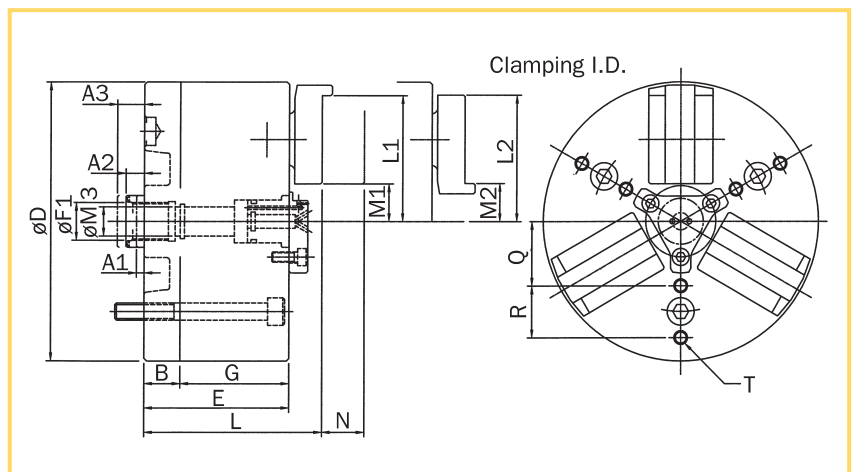
The PS Chuck is typically used for centering work not requiring a thru-hole. The PG Chuck can be supplied with air (for sensors) or coolant through the chuck.



PS Chuck
Solid Center Chuck



PG Chuck
With Thru-Holes for
Air and/or Coolant Options



SPECIFICATIONS

UNIT: mm

| SPEC. | MODEL | PS/PG-6 | PS/PG-8 | PS/PG-10 | PS/PG-12 | PS/PG-15 | PS/PG-18 | PS/PG-21 |
|---------------------|-------------------|----------|----------|----------|----------|----------|----------|----------|
| Gripping Force | kgf | 6600 | 8700 | 10,800 | 10,800 | 16,500 | 16,500 | 16,500 |
| Max Draw Pull | kgf | 2200 | 2900 | 3600 | 3600 | 5500 | 5500 | 5500 |
| Max Rotation Speed | rpm | 3000 | 2800 | 2500 | 2000 | 1600 | 1200 | 900 |
| Jaw Stroke | | 7.9 | 9.5 | 12.7 | 12.7 | 15.8 | 15.8 | 15.8 |
| Shifter Stroke | | 11.3 | 13.3 | 17.5 | 17.5 | 22.3 | 22.3 | 22.3 |
| Clamping Diameter | i.d. | 70-152 | 76-203 | 85-235 | 127-305 | 165-381 | 241-457 | 317-533 |
| | o.d. | 12.7-120 | 16-152 | 50-203 | 63-241 | 76-317 | 89-394 | 162-470 |
| Weight | kg | 18 | 27 | 45 | 67.5 | 84.5 | 120 | 180 |
| GD ² | kg-m ² | 0.15 | 0.48 | 1.23 | 2.42 | 8.49 | 15.17 | 25.00 |
| Applicable Cylinder | | 2R105-25 | 2R120-35 | 2R120-35 | 2R120-35 | 2R150-35 | 2R150-35 | 2R150-35 |
| A1 | | 4.4 | 4.0 | 4.0 | 4.0 | 12.7 | 12.7 | 12.7 |
| A2 | | 10.6 | 12 | 13.5 | 13.5 | 24.7 | 24.7 | 24.7 |
| A3 | | 15.7 | 17.3 | 21.5 | 21.5 | 35 | 35 | 35 |
| B | | 26 | 30 | 31.4 | 31.4 | 34.9 | 34.9 | 34.9 |
| D | | 162 | 200 | 254 | 300 | 381 | 457 | 533 |
| E | | 85.2 | 100 | 118 | 118 | 131 | 131 | 131 |
| F1 | | M16 | M16 | M18 | M18 | M24 | M30 | M30 |
| G | | 59.2 | 70 | 86.6 | 86.6 | 96.1 | 96.1 | 96.1 |
| L | | 104.5 | 123.3 | 147.1 | 147.1 | 163.4 | 163.4 | 163.4 |
| L1 | | 73.15 | 88.95 | 112.7 | 133.27 | 171.45 | 209.55 | 247.65 |
| L2 | | 78 | 92.2 | 112.7 | 133 | 176 | 213.6 | 252 |
| M1 | | 17.3 | 22.1 | 30 | 50.6 | 65.8 | 103.9 | 142 |
| M2 | | 22.2 | 25.3 | 30.1 | 50.7 | 69.8 | 107.9 | 146 |
| M3 | | 17 | 17 | 20 | 20 | 26.5 | 33.5 | 33.5 |
| N | | 24.9 | 29.4 | 36.5 | 36.5 | 41.9 | 41.9 | 41.9 |
| Q | | 37.5 | 50 | 65 | 65 | 62.5 | 90 | 90 |
| R | | 67.5 | 85 | 105 | 105 | 107.5 | 145 | 145 |
| T | | M8 | M8 | M10 | M10 | M12 | M16 | M16 |
| U1 | | 41.5 | 44 | 57 | 57 | 76 | 105 | 105 |
| U2 | | M6 x 12 | M6 x 12 | M8 x 15 | M8 x 15 | M8 x 15 | M10 x 15 | M10 x 15 |

PSC & PGC Compensating Power Swing Chucks

Our PS and PG Chucks can be supplied with compensating jaws – the PSC and PGC models. Because the jaws float independently, it is suited for rough castings that are not perfectly round and are more difficult to clamp with self-centering chucks. These chucks are designed with chuck jaws that compensate to make sure that grip force equals out on all jaws. Both compensating models are available with air, coolant or both air and coolant through the chuck.

